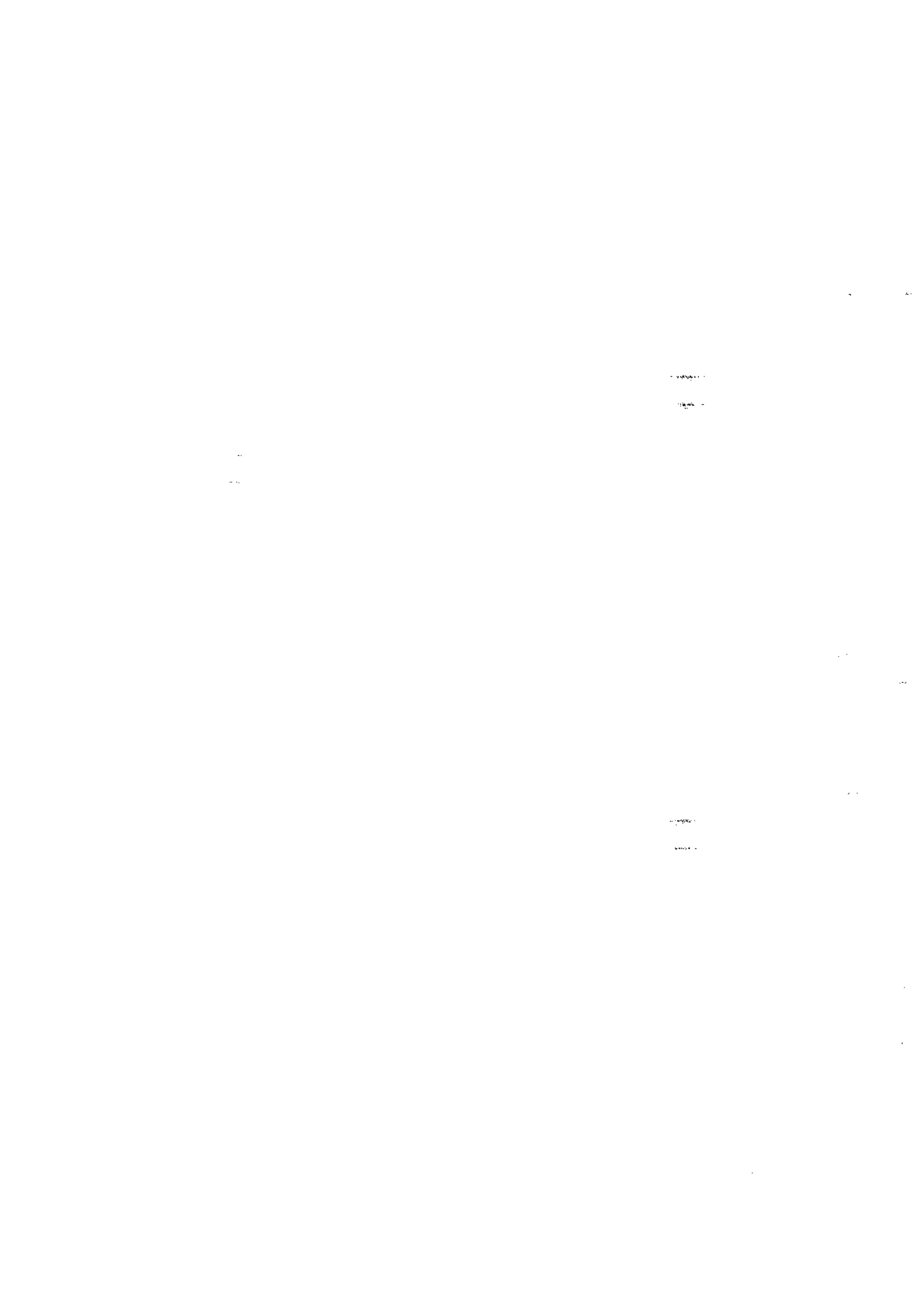


**TANCO AUTOWRAP**  
**200S MODEL 1994**  
**OPERATORS HANDBOOK**  
**AND**  
**PARTS LIST**  
**WD65-200-CS-MO594**







1000

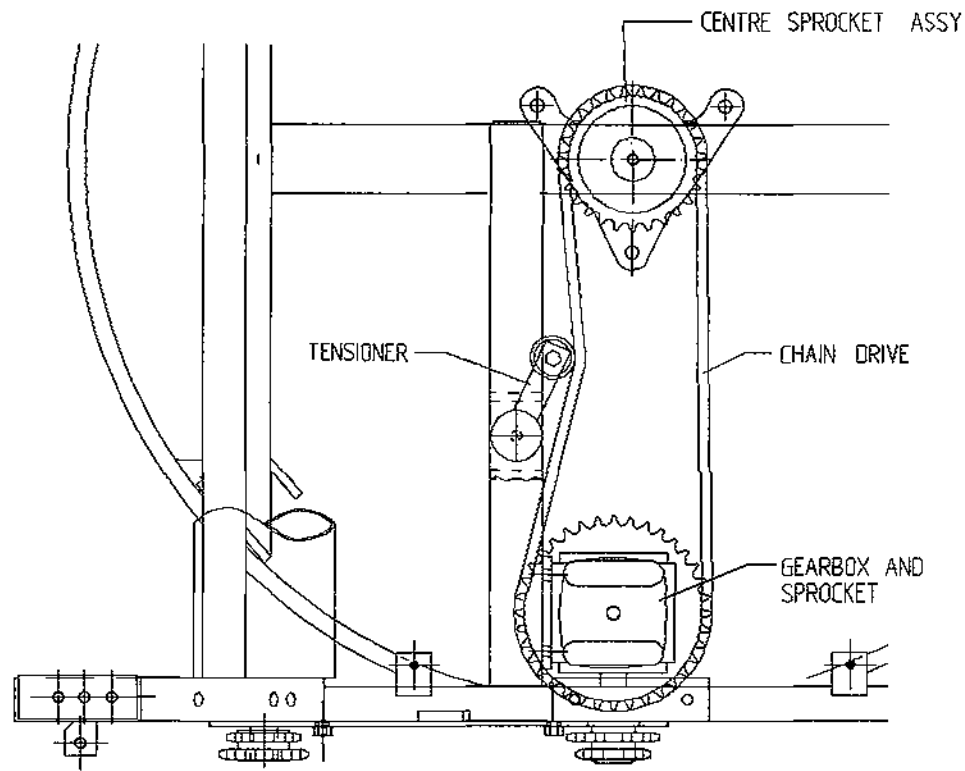
1000

1000

1000

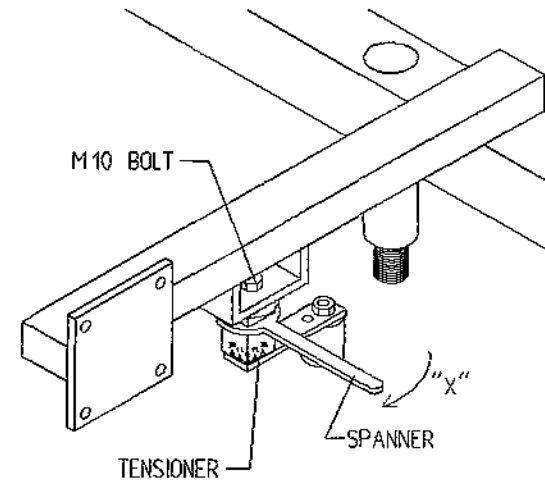


# TANCO AUTOWRAP CONSTANT INDEXING PRIMARY CHAIN DRIVE TENSIONING SYSTEM



## CHAIN TENSIONING PROCEDURE

1. LOOSEN M10 BOLT SECURING BELT TENSIONER.
2. TENSION BELT BY ADJUSTING TENSIONER USING SPANNER IN DIRECTION OF ARROW "X" UNTIL SETTING OF 15-20 IS REACHED.
3. RE-TIGHTEN M10 BOLT TO SECURE TENSIONER IN POSITION.



11

Fig. 2

FILE NAME WD60-LA11

# TANCO AUTOWRAP 1994 DRIVE BELT TENSIONING SYSTEM

## BELT TENSIONING PROCEDURE

1. CHECK THAT HYDRAULIC MOTOR MOUNTING BRACKET IS SECURE IN POSITION.
2. LOOSEN M10 BOLT WHICH CLAMPS BELT TENSIONER BODY TO MOTOR MOUNT.
3. TENSION BELT BY ADJUSTING TENSIONER USING SPANNER IN DIRECTION OF ARROW "X" UNTIL SETTING OF 30 IS REACHED.
4. RE-TIGHTEN M10 BOLT TO SECURE TENSIONER IN POSITION.

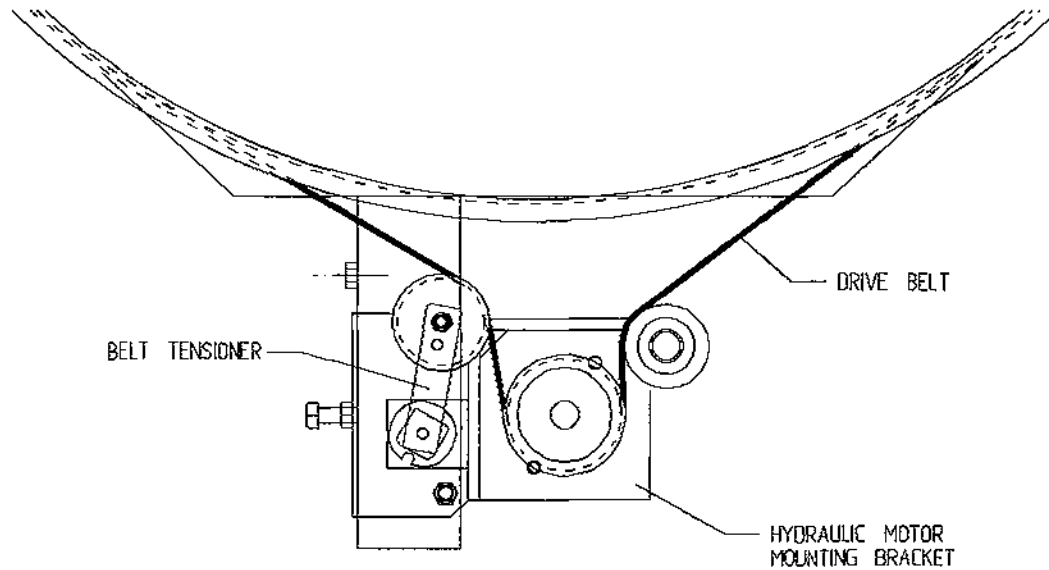
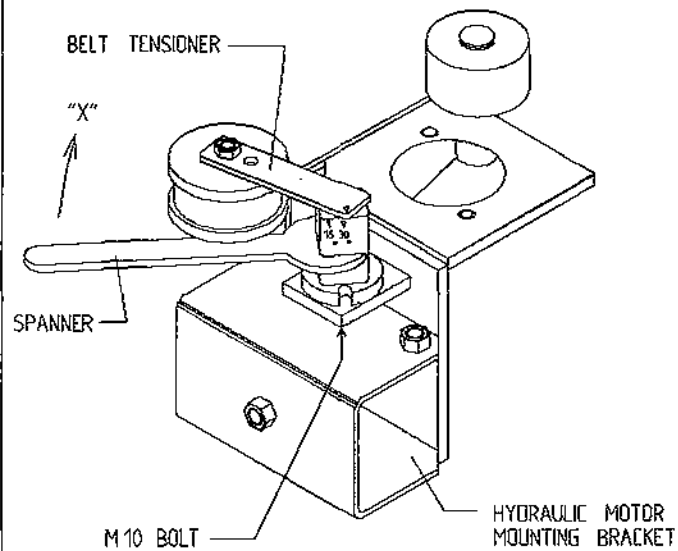


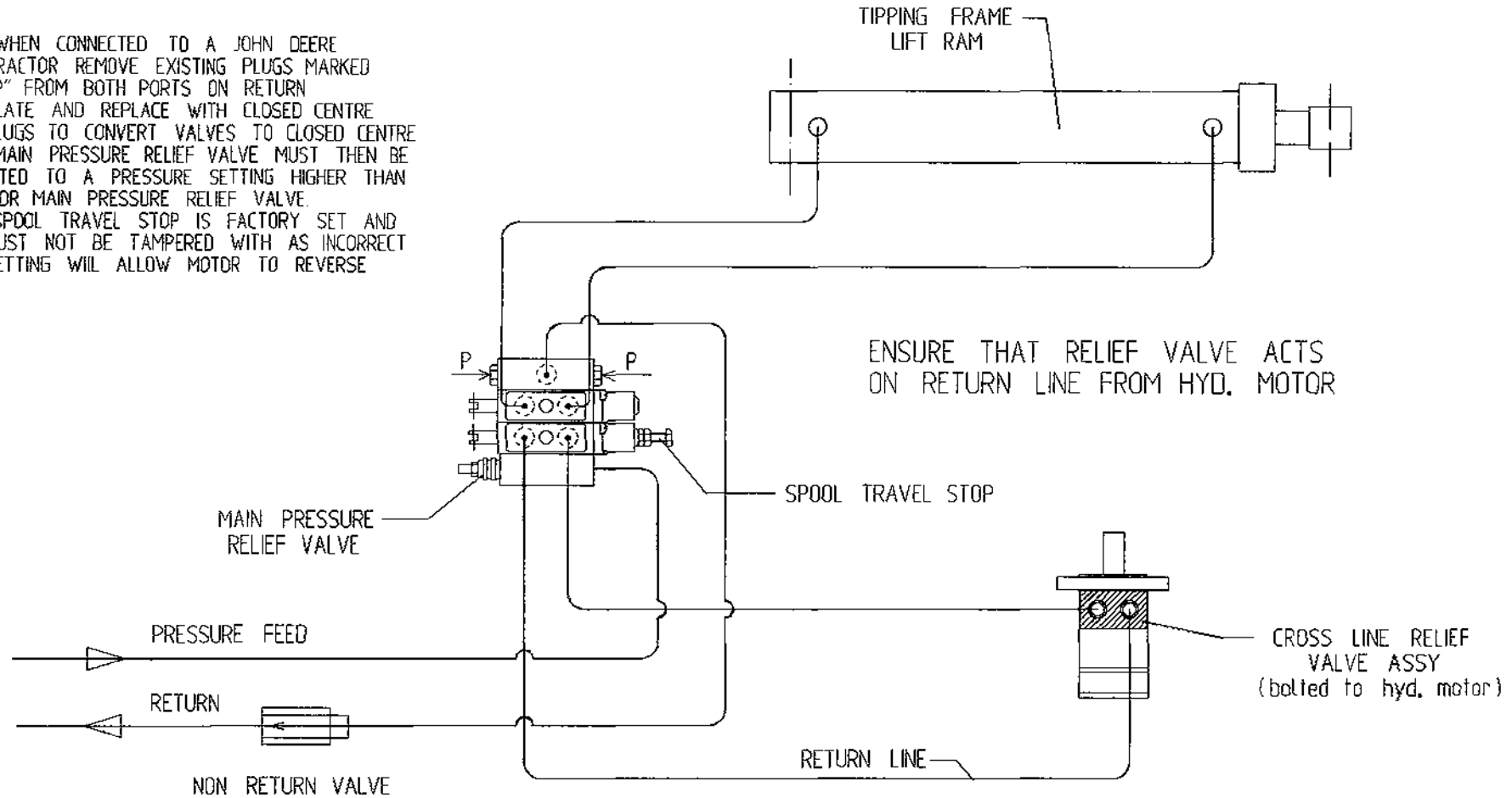
Fig. 3



# TANCO AUTOWRAP 200S MODEL 1994 HYDRAULIC CIRCUIT DIAGRAM

**NOTE:**

- (A) WHEN CONNECTED TO A JOHN DEERE TRACTOR REMOVE EXISTING PLUGS MARKED "P" FROM BOTH PORTS ON RETURN PLATE AND REPLACE WITH CLOSED CENTRE PLUGS TO CONVERT VALVES TO CLOSED CENTRE
- THE MAIN PRESSURE RELIEF VALVE MUST THEN BE ADJUSTED TO A PRESSURE SETTING HIGHER THAN TRACTOR MAIN PRESSURE RELIEF VALVE.
- (B) SPOOL TRAVEL STOP IS FACTORY SET AND MUST NOT BE TAMPERED WITH AS INCORRECT SETTING WILL ALLOW MOTOR TO REVERSE







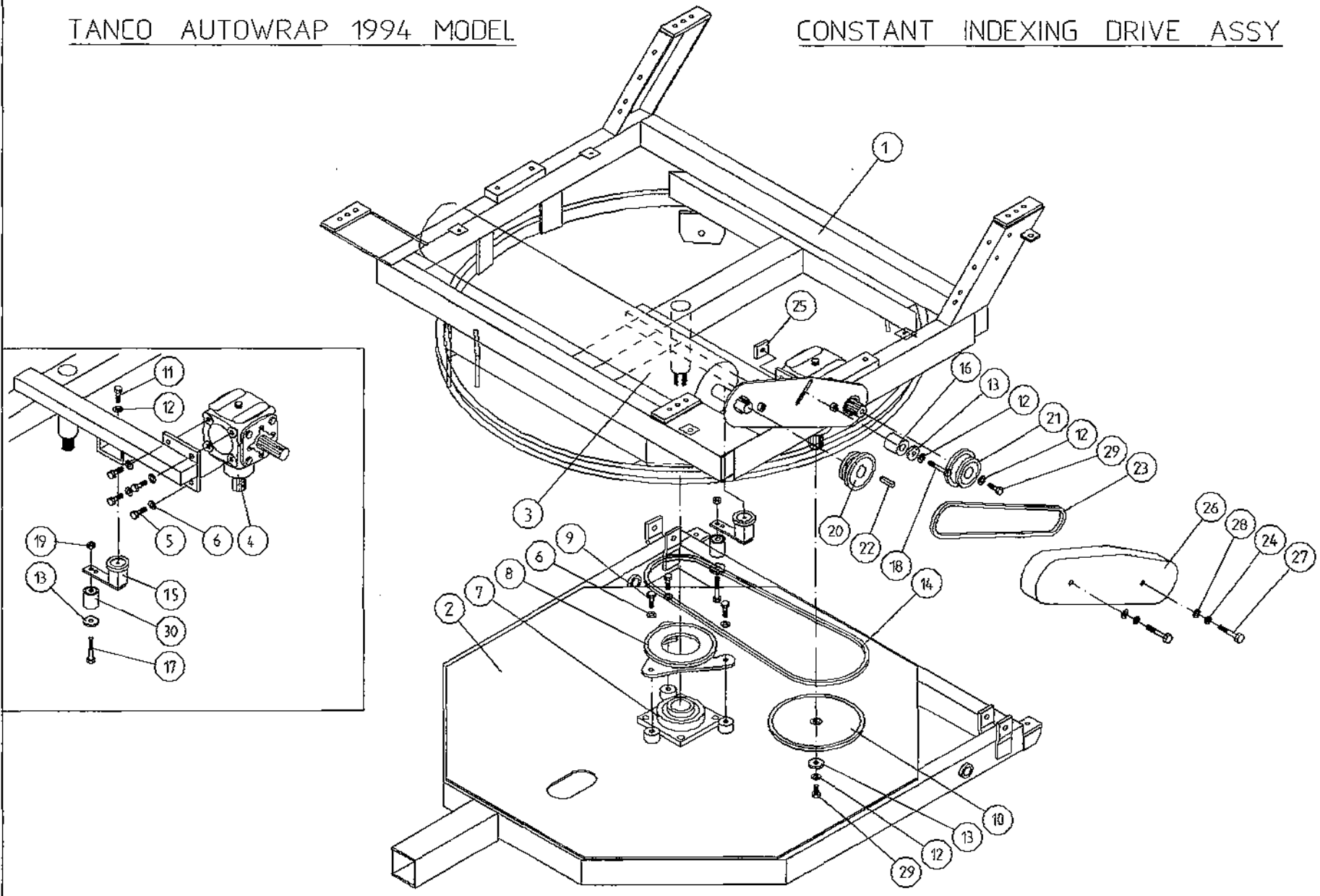
**WD60-PL24**  
**TANCO AUTOWRAP 200 S MODEL (3PT LINKAGE) 1994**  
**PARTS LIST**  
**HYDRAULIC COMPONENTS (DIN)**

ITEM NO.	DESCRIPTION	QTY.	PART-NO
1	2 BANK SPOOL VALVE C/W LEVERS	1	Z01-03-018D2
2	HYDRAULIC MOTOR (C.L.)	1	Z01-02-AR75
3	CROSS LINE RELIEF VALVE	1	Z01-03-002
4	1/2" BSP BOTTOM BANJO BOLT (SPECIAL)	2	Z01-03-002B
5	HYD. RAM (FOR TIPPING FRAME)	1	Z01-01-AR687
6	1/2" DOWTY WASHER	15	Z01-04-03
7	1/2" NON RETURN VALVE	1	Z01-03-017
8	1/2" x 3/8" ADAPTOR	8	Z01-06-06-08
9	108" ST/90 3/8" D/W HOSE	2	Z38-R2-108S9
10	84" ST/90 1/2" S/W HOSE	1	Z12-R1-84-S9
11	1/2" x 1/2" ADAPTOR	3	Z01-06-08-08
12	1/2" MALE END Q/R COUPLING	2	Z01-15-081
13	84" ST/90 3/8" D/W HOSE	2	Z38-R2-84-S9
14	72" ST/90 3/8" D/W HOSE	1	Z38-R2-72-S9

TANCO AUTOWRAP 1994 MODEL

CONSTANT INDEXING DRIVE ASSY

51

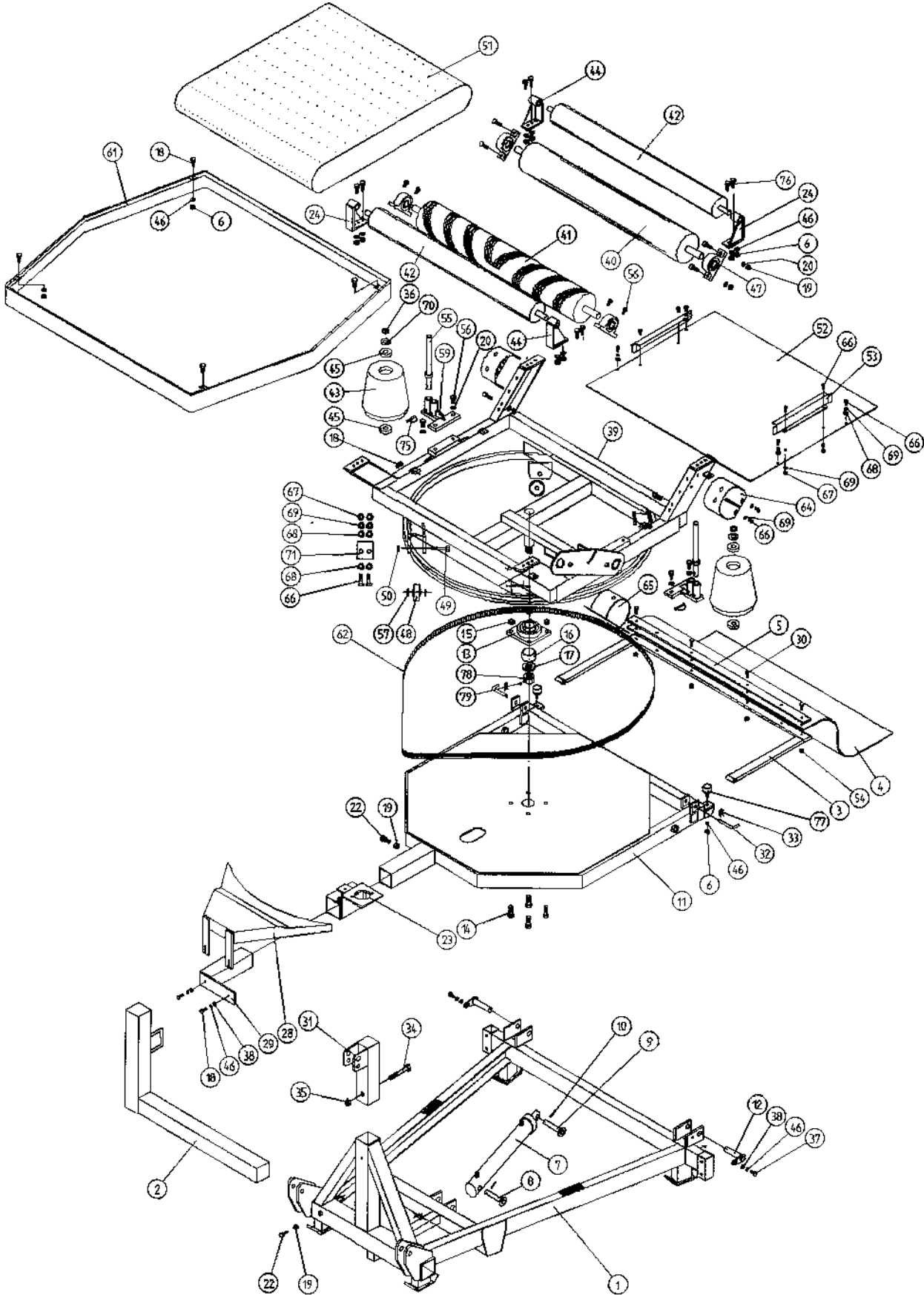


**TANCO AUTOWRAP**  
**CONSTANT INDEXING DRIVE ASSEMBLY**

**PARTS LIST**

ITEM NO.	DESCRIPTION	QTY.	PART-NO
1	TURNTABLE ASSY.	1	WD60-TAC
2	TIPPING FRAME ASSY.	1	WD60-TFC
3	DRIVE ROLLER ASSY.	1	WD65-BRD
4	GEAR BOX	1	Z01-25-300
5	M12 HEX HD SET x 30mm LONG	4	Z26-082S
6	12mm DIA SPRING WASHER	7	Z12-02-12
7	2" DIA FLANGE BEARING	1	Z06-49EC
8	CENTRE SPROCKET ASSY 27 TOOTH	1	WD60-CSA
9	M12 HEX HD SET x 25mm LONG	3	Z26-081S
10	36 TOOTH SPROCKET	1	Z06-D65-36S
11	M10 HEX HD SET x 25mm LONG	1	Z26-0611S
12	10mm DIA SPRING WASHER	4	Z12-02-10
13	RETAINING COLLAR	3	WD623-071
14	CHAIN 3/4" PITCH X 87 PITCHES	1	Z09-AW-4
15	ROSTA TENSIONING UNIT ARM	1	Z06-454
16	CHAIN TENSIONER	1	WD65-CT
17	M10 HEX HD BOLT x 65MM LONG	1	Z26-0671B
18	M10 HEX HD BOLT x 80MM LONG	1	Z26-0691B
19	M10 LOCKNUT	1	Z23-10
20	SPROCKET DOUBLE SIMPLEX 13T/16T KEYED	1	Z06-D65-1316K
21	SPROCKET DOUBLE SIMPLEX 13T/16T SPLINED	1	Z06-D65-1316S
22	KEY 5/16" x 5/16" x 32mm LONG	1	WD623-K32
23	CHAIN 3/4" PITCH X 62 PITCHES	1	Z09-AW-3
24	1/2" DIA STAR WASHER	1	Z10-01-121
25	LOCKING FLAT	1	WD623-060
26	CHAIN GUARD	1	WD60-CGC
27	M10 HEX HD SET x 70mm LONG	2	Z26-068B
28	10mm DIA FLAT WASHER	2	Z10-02-10
29	M10 HEX HD SET x 30mm LONG	2	Z26-062S
30.	CHAIN TENSIONER	1	WD60-CT

# TANCO AUTOWRAP 200 S MODEL 1994

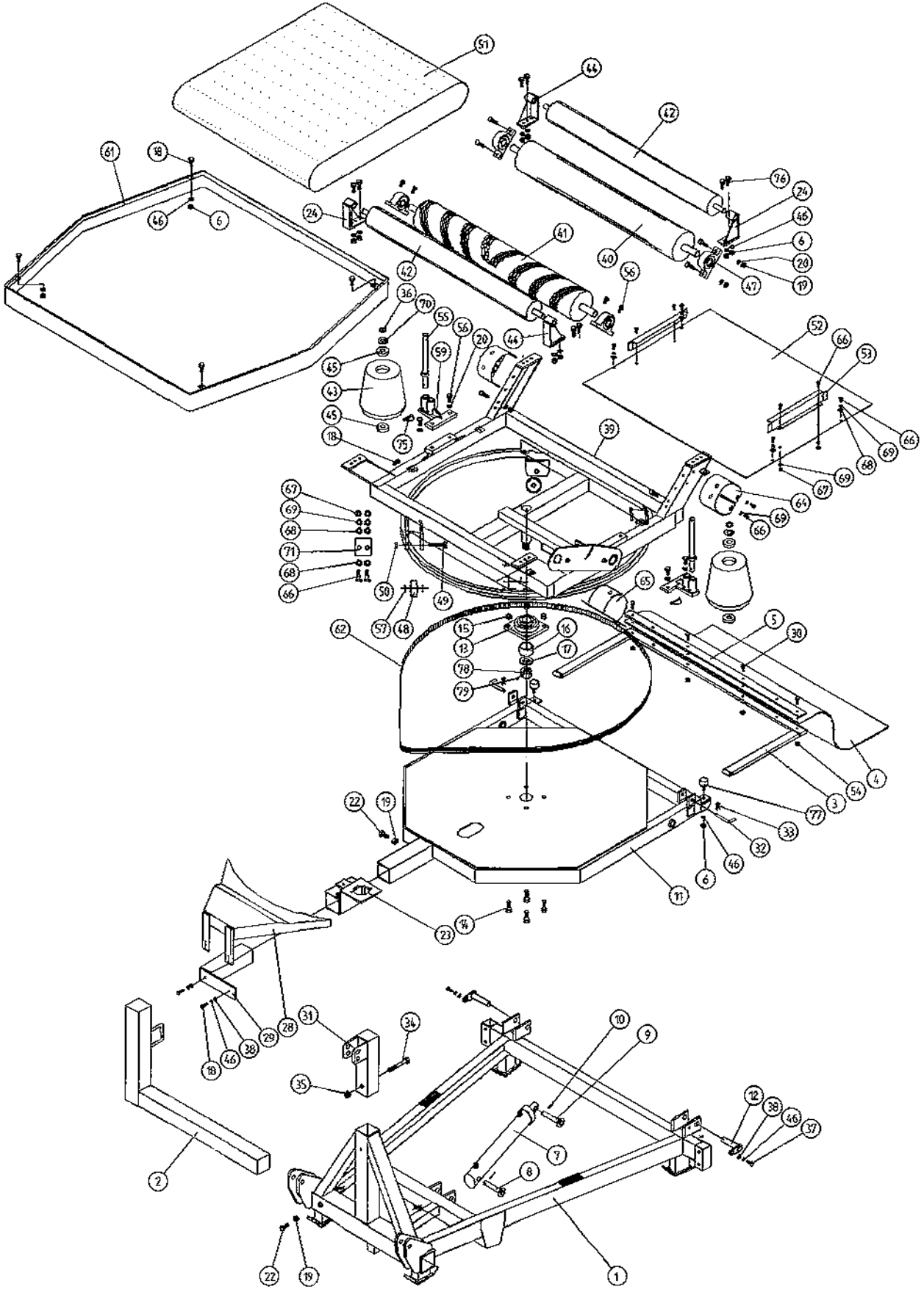


**TANCO AUTOWRAP 200S MODEL (3PT. LINKAGE) 1994  
MAIN ASSEMBLY**

PARTS LIST			
ITEM NO.	DESCRIPTION	QTY.	PART-NO.
1	3PT.LINKAGE FRAME ASSEMBLY	1	WD63-MF
2	DISPENSER BRACKET LOWER SUPPORT	1	WD63-DMLH
3	RUBBER MAT MOUNTING FRAME ASSEMBLY	1	WD63-MMF
4	RUBBER MAT	1	Z05-02AWM
5	CLAMPING PLATE	1	WD63-1300
6	M10 HEX NUT	18	Z18-10
7	HYD. RAM	1	Z01-01-AR687
8	RAM BOTTOM PIVOT	1	Z03-02-330
9	RAM TOP PIVOT PIN	1	Z03-03-50
10	2" X 1/4" SPLIT PIN	2	Z03-21-29
11	TIPPING FRAME ASSY.	1	WD60-TFC
12	TIPPING FRAME PIVOT PIN C/W GREASE NIPPLE	2	Z03-01-905 Z39-60
13	2" DIA FLANG BEARING C/W CAM LOCK COLLAR	1	Z06-49-ECC
14	5/8" UNF HEX HD SET X 2" LONG	4	Z30B-064
15	5/8" UNF LOCKNUTS	4	Z20-10
16	SPACER	1	WD63-1043
17	RETAINING COLLAR	1	WD60-770
18	M10 HEX HD SET X 30mm LONG	11	Z26-062S
19	M12 HEX NUT	9	Z18-12
20	12mm DIA SPRING WASHER	12	Z12-02-12
22	M12 HEX HD SETS X 30mm LONG	1	Z26-082S
23	HYD. MOTOR MOUNTING ASSY.	1	WD60-HMB
24	ROLLER MOUNTING BRACKET	2	WD60-TRMBL
28	HYD. MOTOR GUARD ASSY	1	WD60-HMG
29	HYDRAULIC MOTOR GUARD MOUNTING BRACKET	1	WD60-HAMB
30	M8 HEX HD BOLT X 50mm LONG	4	Z26-045B
31	TOP LINK BRACKET ASSEMBLY	1	WD63-TLB
32	BISSEL PIN	2	Z03-22-AW100
33	4MM "R" CLIP	2	Z36-02
34	M16 HEX HD BOLT X 120mm LONG	1	Z26-134B
35	M16 LOCKNUTS	1	Z23-16
36	CIRCLIP	2	Z28-525
37	M10 HEX HD. SET X 25mm LONG (TUFLOCK)	2	Z26-061S
38	10mm DIA MACHINED FLAT WASHER	4	Z11-02-10
39	TURN TABLE ASSY.	1	WD60-TAC
40	BIG ROLLER ASSY IDLER	1	WD65-BRI
41	BIG ROLLER ASSY. DRIVER	1	WD65-BRD
42	SMALL ROLLER ASSY	2	WD60-SMR
43	SIDE ROLLER	2	Z06-AWR
44	ROLLER MTG. BRACKET	2	WD60-TRMBR
45	BEARING (25mm I.D.)	4	Z06-AWRB-93
46	10mm DIA SPRING WASHERS	23	Z12-02-10
47	1 1/4" PILLOW BLOCK BEARING C/W CAM LOCK COLLAR	4	Z06-485
48	SUPPORT WHEELS (4" DIA)	4	Z06-466
49	AXLE ASSY. C/W GREASE NIPPLE	4	Z03-22-AW/AX Z39-60



# TANCO AUTOWRAP 200 S MODEL 1994

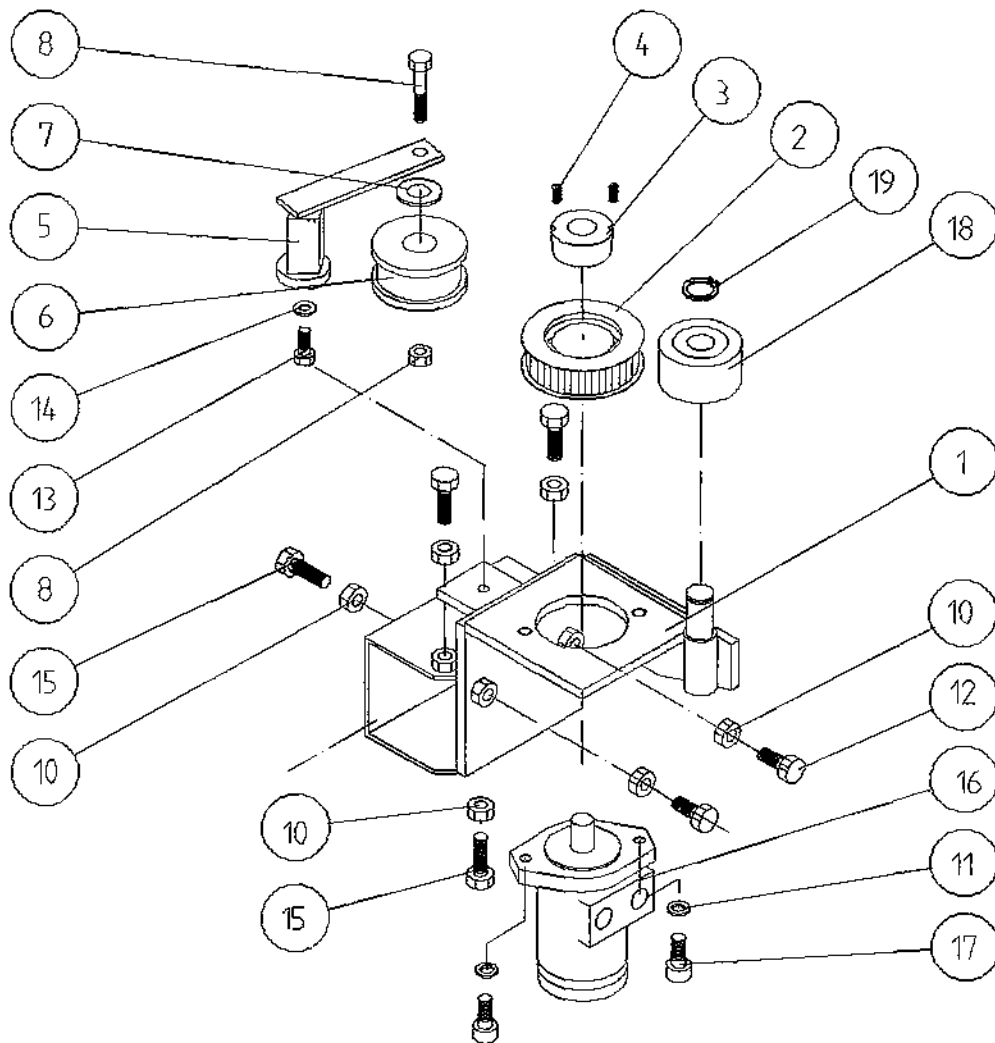


**TANCO AUTOWRAP 200S MODEL (3PT. LINKAGE) 1994  
MAIN ASSEMBLY**

**PARTS LIST**

50	M20 LOCKNUTS	4	Z23-20
51	1 METER WIDE X 89 1/2" LONG X FLAT BELT	1	Z05-02AWV
52	TURN TABLE COVER PLATE	1	WD60-093
53	BELT GUIDE ASSY	2	WD625-BG
54	M8 LOCKNUTS	4	Z23-08
55	ROLLER SHAFT ASSEMBLY	2	WD60-RSA
56	M12 HEX HD. SETS X 40mm LONG	12	Z26-084S
57	SPACER	8	WD60-198
58	1/8" B.S.P. ST GREASE NIPPLE	4	Z39-60
59	END ROLLER MOUNTING BRACKET	2	WD60-ERM
61	MAIN GUARD ASSY	1	WD60-MG
62	170" LONG X 1/2 PITCH X 1" WIDE TOOTHED BELT	1	Z05-02-AW20
64	GRASS GUARD (CLOSED TYPE)	3	Z49-98
65	GRASS GUARD (OPEN TYPE)	1	Z49-981
66	M8 HEX HD SETS X 20mm LONG	20	Z26-039S
67	M8 HEX NUTS	14	Z18-08
68	8mm DIA FLAT WASHERS (MUD FLAP)	20	Z11-02-081
69	8mm DIA SPRING WASHERS	20	Z12-02-08
70	THRUST WASHER	2	WD60-292
71	SCRAPER	2	WD60-705
75	10mm "D" LINCH PIN	2	Z38-03
76	M10 HEX HD SET X 35mm LONG	8	Z26-063S
77	BUFFER 56mm DIA X 40mm LONG	2	Z40-20
78	1 1/4" UNC HEX NUT	1	Z18-300
79	M8 GRUB SCREW	2	Z28-006

# TANCO AUTOWRAP 1994 MODEL HYDRAULIC MOTOR DRIVE ASSEMBLY



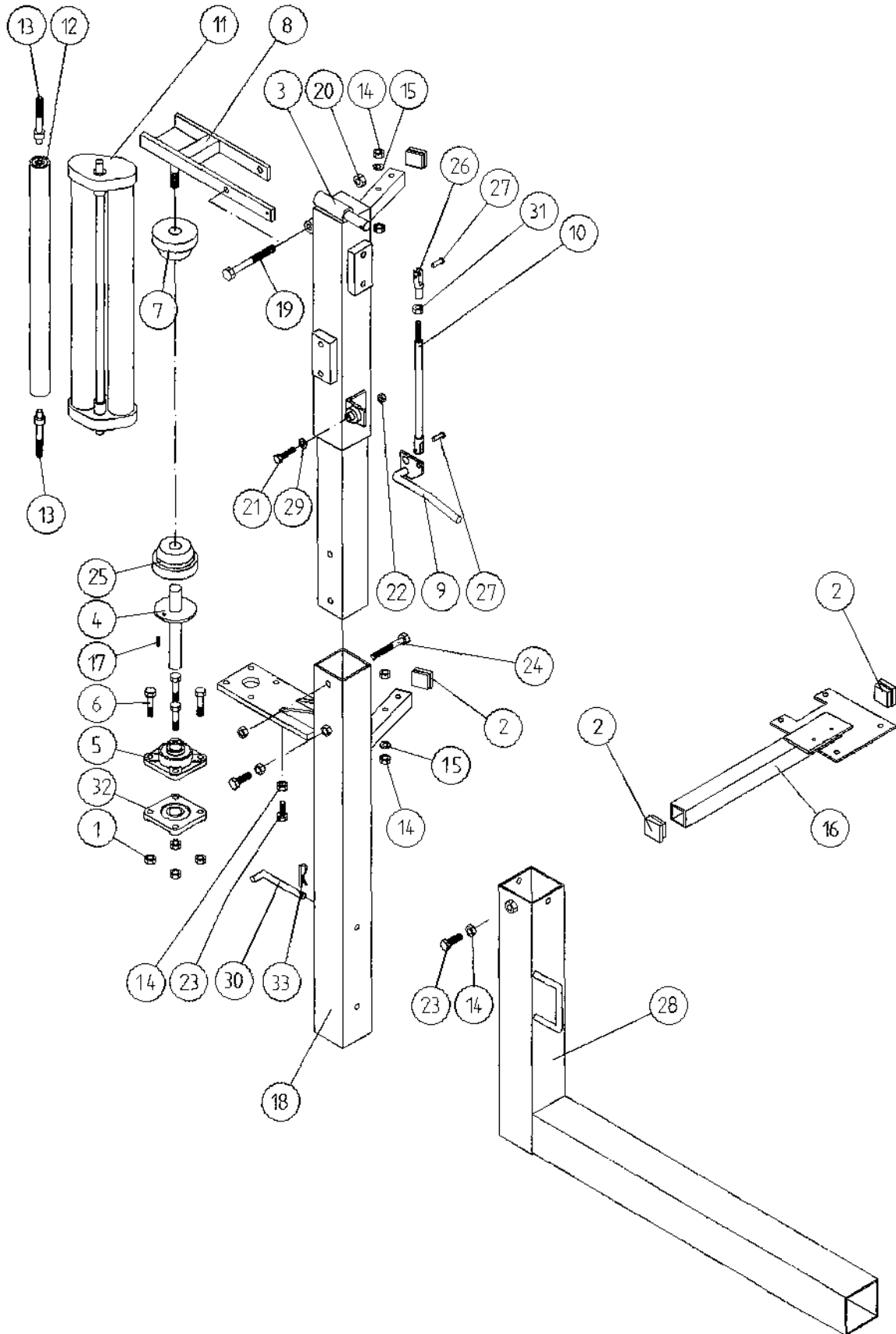
WD60-PL27

TANCO AUTOWRAP 1994 MODEL  
HYDRAULIC MOTOR DRIVE ASSEMBLY

PARTS LIST

ITEM NO.	DESCRIPTION	QTY.	PART-NO.
1.	HYDRAULIC MOTOR MOUNTING ASSY.	1	WD65-HMB
2.	4" DIA X 1/2" PITCH TOOTHED PULLY	1	Z09-005-AW1
3.	TAPER LOCK BUSH TO SUIT 1" DIA SHAFT	1	Z09-005-AW2
4.	M10 STUDS X 15MM	2	Z28-01
5.	ROSTA TENSIONING UNIT ARM	1	Z06-454
6.	STEPPED ROLLER C/W BEARINGS	1	Z06-456
7.	SPACER	1	WD60-798
8.	M10 HEX HD BOLT X 60MM LONG	1	Z26-067B
9.	M10 LOCKNUT	1	Z23-10
10.	M12 HEX NUT	6	Z18-12
11.	12MM DIA SPRING WASHER	2	Z12-02-12
12.	M12 HEX HD SET X 30MM LONG	2	Z26-082S
13.	M10 HEX HD SET X 25MM LONG (TUFLOCK)	1	Z26-061S
14.	10MM DIA SPRING WASHER	1	Z12-02-10
15.	M12 HEX HD SET X 40MM LONG	6	Z26-084S
16.	HYDRAULIC MOTOR C.L.	1	Z01-02-AR75
17.	M12 SOCKET HD SCREW X 30MM LONG	2	Z13-6-12X30
18.	ROLLER C/W BEARINGS	1	Z06-457
19.	CIRCLIP	1	Z28-525

TANCO AUTOWRAP 200S MODEL 1994  
FILM DISPENSER SYSTEM



FILE NAME WD60-PL15

WD60-PL15

TANCO AUTOWRAP 200S MODEL 1994

FILM DISPENSING SYSTEM

PARTS LIST

ITEM NO.	DESCRIPTION	QTY.	PART-NO
1.	M10 LOCKNUTS	4	Z23-10
2.	PLASTIC CAPS (T SUIT 40 X 40 X 3 RHS)	4	Z32-07
3.	DISPENSER MOUNTING (UPPER)	1	WD60-DMUH
4.	FILM SPOOL ASSEMBLY	1	WD60-SPO
5.	1" DIA FLANGE BEARING C/W CAM LOCK	1	Z06-48EC
6.	M10 HEX HD BOLT X 50MM LONG	4	Z26-066B
7.	CONE (TOP) C/W BALL BEARING	1	Z06-45-01
8.	CLAMP ASSEMBLY	1	WD60-DMCA
9.	LEVER ASSEMBLY	1	WD60-DMLA
10.	LINK ASSEMBLY	1	WD60-DMLK
11.	FILM DISPENSER UNIT MK 6 (70% STRETCH)	1	D613
12.	SLAVE ROLLER ASSY (PLASTIC COATED)	1	WD60-SLR
13.	SLAVE ROLLER PIVOT	2	WD60-SRS
14.	M12 HEX NUTS	7	Z18-12
15.	12mm DIA SPRING WASHER	2	Z12-02-12
16.	SPOOL VALVE MOUNTING PLATE ASSEMBLY	1	WD63-SVM
17.	1/4" DIA TENSION X 3/4" LONG	1	Z03-20-062
18.	DISPENSER MOUNTING (LOWER)	1	WD60-DMLH
19.	M12 HEX HD BOLT X 130M LONG	1	Z26-094B
20.	M12 LOCKNUT	3	Z23-12
21.	M8 HEX HD BOLT X 35MM LONG	1	Z26-042S
22.	M8 LOCKNUT	1	Z23-08
23.	M12 HEX HD SET X 30MM LONG	3	Z26-082S
24.	M12 HEX HD BOLT X 100MM LONG	1	Z26-092B
25.	CONE (BOTTOM)	1	Z06-45-02
26.	CLEVIS (M10)	1	Z49-335
27.	PIN (5/16" DIA) C/W CLIP	2	Z49-337
28.	4MM "R" CLIP	1	Z36-02
29.	8mm DIA MUD FLAP WASHER	1	Z11-02-081
30.	BISSEL PIN X 110M LONG	1	WD60-874
31.	5/16" UNF HEX NUT	1	Z15-05
32.	1" DIA FLANGE BEARING	1	Z06-48

### GUARANTEE

Subject as hereunder provided, the Sellers undertake to correct either by repair or at their election by replacement any defect of material or workmanship which occurs in any of its goods within twelve months after delivery of such goods to first user, with the exception of contractors or commercial users when warranty period is six months.

In respect of Autowraps the warranty period is for 12 months or 8000 bales which ever occurs first.

In respect of Aerways tine breakage will be assessed on an individual basis in every case.

The term goods when used in this document means the article or articles described in invoice as sold by the sellers but does not include equipment or proprietary parts or accessories not manufactured by the sellers. The sellers, however, undertake to pass on so far as they legally can to the first user the benefit of any warranty given to the Sellers by the suppliers of such equipment, parts or accessories.

This understanding shall not apply to:

- (a) Any goods which have been sold by the first user.
- (b) Any goods which have been injured by unfair wear and tear, neglect or improper use.
- (c) Any goods the identification marks of which have been altered or removed.
- (d) Any goods which have not received the basic normal maintenance such as tightening of bolts, nuts, tines, hose connections and fittings and normal lubrication with the recommended lubricant.
- (e) The use of any product on tractors exceeding the recommended horsepower.
- (f) Any goods which have been altered or repaired other than on instruction or with the written approval of the Seller or to which any part not manufactured or having written approval by the Sellers have been fixed.
- (g) Any second-hand goods or part thereof.

Any allegedly defective part or parts returned to the Sellers must be sent carriage paid. No claim for repair or replacement will be entertained unless upon discovery of the alleged defect written notification is sent to the Sellers giving, at the same time, the name of the Buyer from whom the goods were purchased and the date of purchase together with full details of the alleged defect and the circumstances involved, also the serial number of the machine etc.,

The Sellers shall be under no liability to their Buyers and first and subsequent users of their goods or to any other person or persons for loss or damages howsoever arising in respect of either personal injuries or for arising out of, or in any way connected with or arising from the manufacturers sale, handling, repair, maintenance, replacement or use of its goods or the failure or malfunction of any of its goods.

Representation and/or warranties made by any person (including Buyers and employees and other representatives of the Seller) which are inconsistent or conflicting with these conditions are not binding upon the Sellers unless given in writing and signed by a Director of the Sellers.

### CLAIMS

If you wish to make a claim under guarantee.

1. Immediately, stop using the machine.
2. List the details of the machine and damaged item, (as shown inside the front cover of this booklet.
3. Consult with your Tanco dealer (supplier) and have him forward your claim and the damaged item to Tanco.

**INDEX****200S****PAGE NO.**

SAFETY INSTRUCTIONS	1/2
TECHNICAL SPECIFICATIONS	3
PRE-DELIVERY INSTRUCTIONS	4
TRANSPORT INSTRUCTIONS	5
MACHINE IDENTIFICATION	5
PREPARATION OF A NEW MACHINE	6
HYDRAULIC CONNECTIONS	6
OPERATION INSTRUCTIONS	7
FILM OVERLAP SYSTEM	8
SERVICE AND MAINTENANCE	9
FILM THREADING DIAGRAM	10
PRIMARY CHAIN DRIVE TENSIONING SYSTEM	11
DRIVE BELT TENSIONING SYSTEM	12
HYDRAULIC CIRCUIT DIAGRAM (200S MODEL)	13
HYDRAULIC COMPONENTS ILLUSTRATED	14
PARTS LIST FOR ABOVE	14:1
CONSTANT INDEXING DRIVE ASSY ILLUSTRATED	15
PARTS LIST FOR ABOVE	15:1
AUTOWRAP ILLUSTRATED (200S MODEL)	16
PARTS LIST FOR ABOVE	16:1
AUTOWRAP ILLUSTRATED (200S MODEL)	17
PARTS LIST FOR ABOVE	17;1
HYDRAULIC MOTOR DRIVE ASSY ILLUSTRATED	18
PARTS LIST FOR ABOVE	18:1
FILM DISPENSING SYSTEM ILLUSTRATED (200S MODEL)	19
PARTS LIST FOR ABOVE	19:1
FAULT FINDING SUMMARY	20/21



## **GENERAL SAFETY INSTRUCTIONS.**

Before operating, adjusting or servicing the machine it is important that these instructions are carefully read by those directly concerned.

Whilst every care has been taken in the design of this machine there remains a certain amount of risk to Personnel whilst the machine is in use. It is strongly recommended that the user/operator takes all possible precautions to ensure both his own safety and that of others while the Autowrap is operating. The area around the machine should be kept clear at all times and only the operator should be allowed near the machine when working.

The Autowrap is designed and sold for agricultural purposes and as such complies with the definition as laid down for an Agricultural Trailed Appliance.

Under this definition the machine is not fitted with brakes or lights. IT SHOULD NOT UNDER ANY CIRCUMSTANCES BE TOWED ON THE HIGHWAY AT SPEEDS IN EXCESS OF 20 m.p.h. (30 km/h).

If the machine is to be towed on the highway out of daylight hours then a suitable lighting board with indicators, stop lights and rear lights should be fixed to the rear of the machine before proceeding.

Bales should be loaded carefully on to the turntable and not dropped from a height.

Owners and operators are advised to contact their dealer regarding any field or service problems.

## OPERATING SAFETY INSTRUCTIONS

1. Operators should have their hands on the controls at all times when the machine is use.
2. Autowrap control unit and lever controls must remain in the tractor cab at all times. The operator must at no time leave the tractor cab when the machine is in motion.
3. Keep onlookers clear of machine at all times. Danger zone is 5 metres.
4. Beware of rotating turntable and all moving parts.
5. If not operated correctly the bale could fly off the turntable. The end support rollers must always be fitted. Do not exceed recommended turntable speed of 25 r.p.m. Mis-shapen bales combined with excessive turntable speeds can be dangerous.
6. Care must be taken when tipping bales from machine on sloping ground and during subsequent handling to ensure that they do not roll, thus causing hazard.

THINK OF YOUR PERSONAL SAFETY AND THAT OF OTHERS AT ALL TIMES.

## TECHNICAL SPECIFICATIONS

200S Model  
(3 point  
Linkage)

### Dimensions

Total Length - Exceeding Bale Mat	...	208cm
Width with arm raised	...	210cm
Height to top of side (bale guide) rollers		100cm
Height to top of side arm	...	210cm
 Weight	 ...	 900kgs
Speed of turntable	...	25 rev/min*
Oil requirement	...	23litres/min (165 kp cm <sup>2</sup> )
Attachment to tractor	...	T r a c t o r Linkage
Bale sizes	...	120 x 120 cm up to 120 cm x 153 cm max 1000 kgs
Film (Width of Roll)	...	500mm - 750mm

\* The speed of rotation can be varied to suit various conditions but on no account should it exceed 25 r.p.m. (Speeds in excess of 25 r.p.m. will void warranty).

### **PRE-DELIVERY INSTRUCTIONS**

1. Check that machine complies with customers requirements.
2. Check tightness of all nuts and bolts.
3. Grease all lubrication points making sure index rollers and sprockets are greased.
4. If for operation with a John Deere tractor, ensure valve is converted to closed centre.
5. If for operation by Power Pack ensure stabiliser legs are fitted in the two sockets on each side of the main frame at rear of machine.
6. Check that non-return valve is fitted in return line.
7. Check that film dispenser is correctly fitted with marked gear box at top, and that slave roller is adjusted to avoid contact with the gear box covers.
8. Check that all guards are in place.
9. Check that all operation and safety stickers are intact.
10. Check Serial No. plate and note Serial No. of machine for record purposes.
11. Check that bale off loading ramp/mat is fitted.
12. Connect to hydraulic power source and check that everything functions properly and in accordance with instruction stickers.
13. Inform operator of Max speed 25 r.p.m.

## TRANSPORT INSTRUCTIONS

1. Never use straps around the machine when lifting. Use only the following lifting points :- 3pt. Linkage frame and two sockets on each side of the main frame at rear.
2. When transporting machine on tractor three point Linkage the bale loading arm should be in the fully raised position and the safety prop fitted .

## MACHINE IDENTIFICATION

The Serial Number plate is located on 3pt. Linkage frame.

Always refer to this number when ordering parts.  
The Spare parts catalogue number and description should be used.  
The reference numbers are used to help identifying the spare part.

For your records write Serial number here.

Serial Number. \_\_\_\_\_

## PREPARATION OF A NEW MACHINE

1. Check height of film mast to ensure that centre line of film spool is level with the centre line of the bale on the turntable. This will alter with different bale diameters. If this alignment is not correct more film than necessary will be used. See Fig 1. Page 15.
2. When connected to John Deere\* tractor the valve must be converted to closed centre. See Page 18.

## HYDRAULIC CONNECTIONS

Connect the feed and return hoses from the Autowrap valve to the tractor's double-acting facility.

NOTE: The return hose is fitted with a non-return valve to protect the Autowrap from damage in the event of incorrect connection to tractor hydraulics.

NOTE\* To ensure maximum efficiency and length of life of hydraulic components this machine requires a clean supply of hydraulic oil. IT IS RECOMMENDED THAT THE TRACTOR HYDRAULIC FILTER ELEMENT BE REPLACED AND THEREAFTER MAINTAINED IN ACCORDANCE WITH THE MANUFACTURERS RECOMMENDATIONS.

## **OPERATING INSTRUCTIONS**

1. Fit roll of film and thread through the Dispenser roller assembly by following the instruction label on the film mast.
  2. Adjust tractor engine speed to give turntable speed of 16 - 25 r.p.m. **NOTE:-** Speeds in excess of 25 r.p.m. will void warranty.
  3. Lower bale into position with a Grab. Attach film wrap by tying end to a string or net on the bale.
  4. Start wrapping. Film tension is automatically set so that width of film applied to the bale stays at a approx width of 400mm for 500m film.
  5. Continue wrapping until all of bale is covered twice, then allow a further 2 full revolutions of turntable before stopping with end of bale close to operator. Grip film with left hand and while maintaining tension across bale, cut film at R.H. end. Pull loose end of film tight, and tuck under the final wrap to secure loose end and ensure weather proof finish.
  6. Rotate the turntable and Tip bale from machine.
  7. Return turntable to fore and aft position ready for next bale.
- N.B. The use of a Tanco Bale Grab mounted on a frontend loader is recommended for loading bales onto the machine as this unit enables the bales to be positioned accurately and quickly.

**FILM OVERLAP SYSTEM.**

The Autowrap is fitted as standard with the 2 x 2 x 50% film overlap system. This is achieved by means of a chain drive which ensures that the correct number of film layers are applied to the bale after a specific number of revolutions of the turntable. The number of revolutions required to wrap a bale depends on width of film being used and bale size - See table below. The chain to be positioned on outer sprockets for 500mm wide film. See fig. A, Below.

For silage bales we recommend the application of a minimum of four layers of film.

Bale Size	Width of Film Roll	Bale Indicator Setting (Revs)
120cm x 120cm	500mm	22
120CM X 137CM	500MM	24
120CM X 150CM	500MM	26

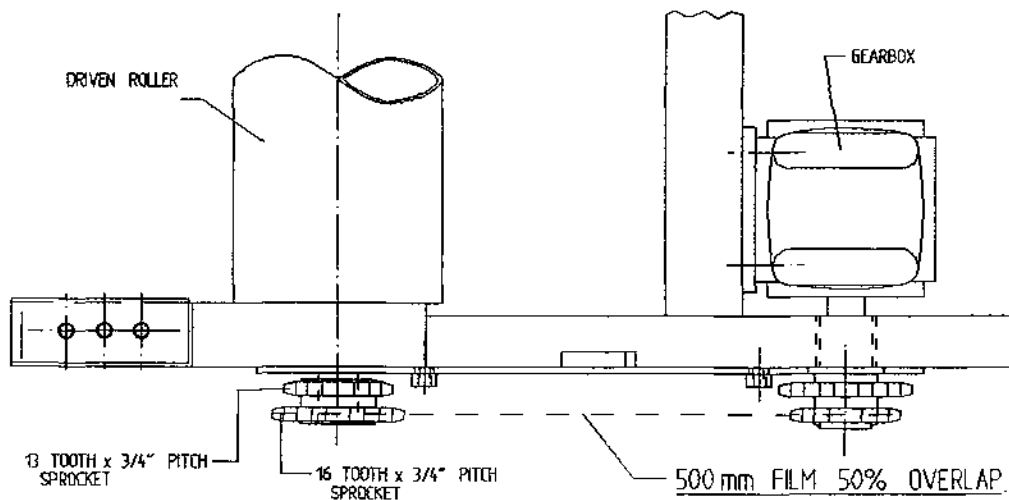


Fig. A

**IMPORTANT**

The above recommendations are only offered as a guide to correct wrapping of silage bales and the manufactures accept no responsibility for variations that may arise and the consequence of same. They are based upon turntable speeds of up to 25 r.p.m., and a minimum film width of 400mm applied to end of Bale when using 500mm wide film roll - See Page 14 proper maintenance of the machine and its correct operation.

It is the responsibility of the operator to ensure the correct number of wraps are applied, as variances can occur with fluctuations in speed of rotation, film quality and tensioning, shape and density of bale etc.



## SERVICE AND MAINTENANCE

1. All nuts and bolts should be tightened after some hours in use and thereafter regularly.
2. Wheel pressure should be normally kept at 42 psi depending on bale weight and field conditions.
3. Inspect moving parts for wear on daily basis.
4. Remove hydraulic motor guard daily and clean loose materials from drive pulley and tensioner roller. Replace guard and lock in position while ensuring it does not collide with rotating turntable assembly.
5. Lubrication.

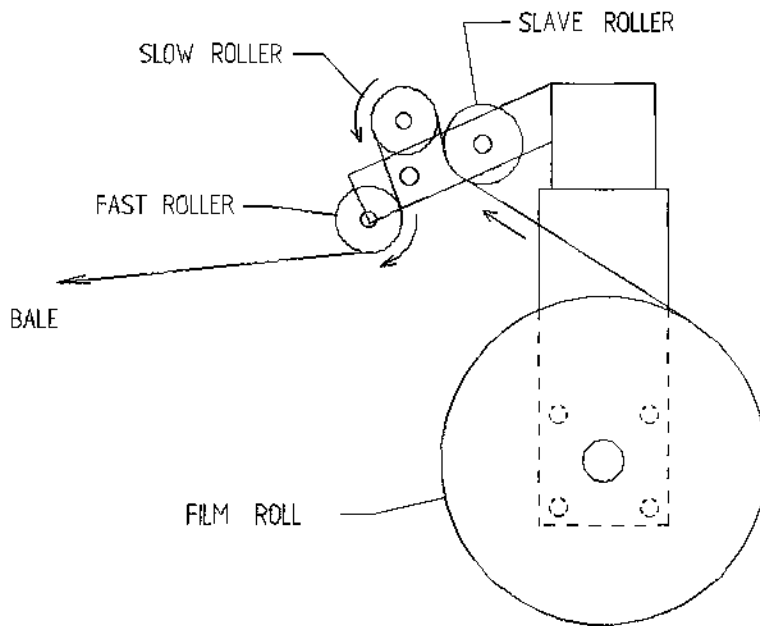
Drive chain & sprocket	-	grease every 24 hours.
End rollers	-	grease every 24 hours.
Main rollers	-	grease every 24 hours.
Hinge pins on Lift arm	-	grease every 24 hours.
Hinge pins on main tip frame	-	grease every 24 hours.
Hydraulic rams	-	grease every 24 hours.
Wheel bearings	-	grease every 24 hours.
Film reel assy.	-	grease every 24 hours.
Dispenser slave roller	-	oil every 24 hours.
Dispenser gearboxes	-	grease sparingly each month
Main spindle	-	grease every 4000 - 5000 bales.
Gearbox oil level	-	Check every 4000 - 5000 bales
6. Adjustments

Secondary drive chain tension.	:	Adjust after first days work then every 50 hours.
Primary drive chain tension	:	Adjust after first days work then check/adjust every 200 hours. See Fig 2.
Toothed drive belt	:	Adjust tension if slippage occurs See Fig 3.
Main conveyor belt	:	Adjust by moving idler roller up slope being careful to keep it parallel to the main drive roller.
7. Film Dispenser

Fit with plunger at top.  
Apply one shot of Multi-Purpose Grease  
Wash rollers often to avoid build up of Tack from film.  
Follow Film threading diagram. See Fig 1.
8. Film Adjustment

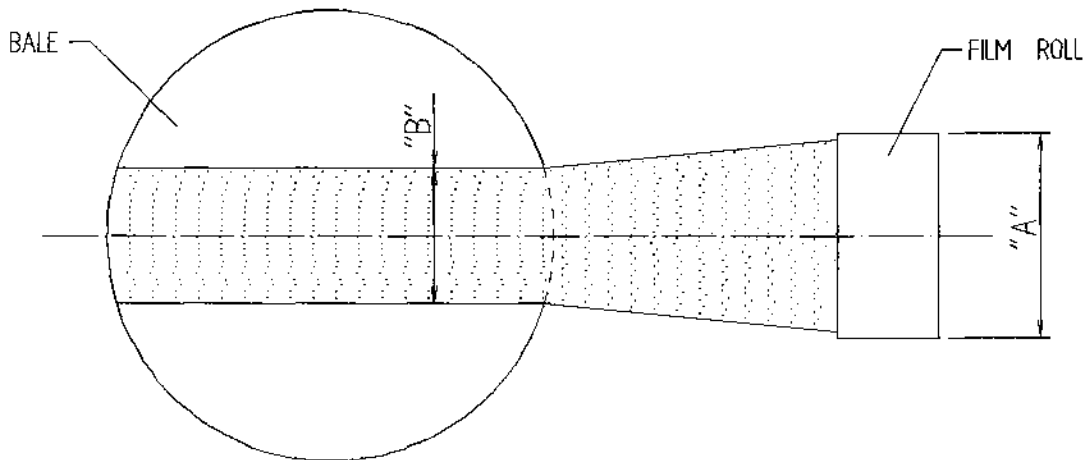
Centre of film roll must be in line with centre of bale and film mast should be vertical.

# TANCO AUTOWRAP FILM THREADING DIAGRAM



## FILM ADJUSTMENT

CENTRE OF FILM ROLL MUST BE IN LINE WITH CENTRE OF BALE AND FILM MAST SHOULD BE VERTICAL.



FILM ROLL WIDTH "A"	FILM WIDTH ON END OF BALE "B"
500 mm	400 mm
750 mm	600 mm

Fig. 1

FILE NAME W060-LA21